

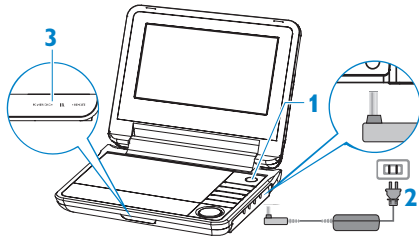
Quick start guide

English

1 Charge

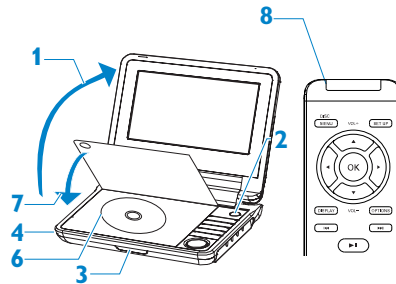
- 1 Switch **OFF** the set.
- 2 Connect the supplied adaptor to the set and the AC outlet.
- 3 The **RED** light comes on.
- 4 The battery pack will be fully charged in approximately 4 hours. When the **RED** light goes off, it means that the battery pack is fully charged.

TIP: You can operate the DVD player while charging. However, it takes longer time to fully charge the battery.



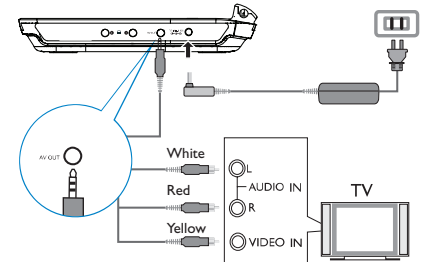
2 Enjoy DVD

- 1 Open the lid.
- 2 Press and hold **POWER**.
- 3 The **GREEN** light turns on.
- 4 Open the DVD door by pushing the **OPEN**.
- 5 Remove protective card (if any).
- 6 Load the DVD disc.
- 7 Close the DVD door and the set will automatically start to play.
- 8 Use the control keys on the set or the remote control.



3 Connect to TV

- 1 Connect the set to the TV as shown.
- 2 Please select an appropriate input or source on the TV. (If your TV does not have Audio and Video inputs, you will need to purchase a RF modulator. Please consult your dealer for more information.)



PHILIPS

▲ OPEN HERE